



Year 5 Mad Microscopes - Wings or Limbs?

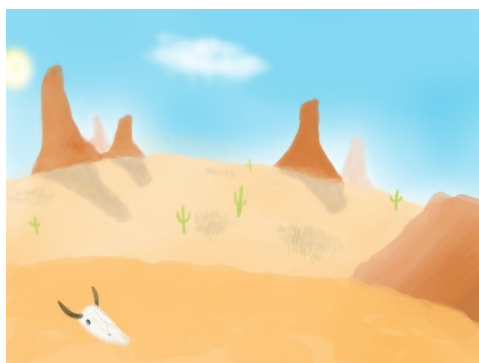
STUDENT WORKSHEET

An adaptation is a feature that has *evolved to help an organism survive and reproduce in its environment.*

Physical properties of an environment such as temperature, rainfall, and other climate factors can make survival difficult for the organisms that live there. These conditions put pressure on organisms which must adapt their behaviour or structure to survive.

Draw lines to connect features to desert and rainforest environments

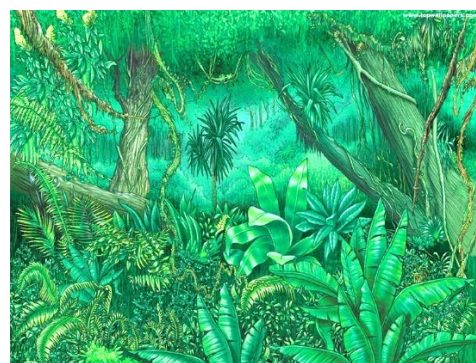
Desert



Physical features

- Low light
- Dry/arid
- Hot
- Full sun
- Wet/humid
- Stable climate
- Warm
- Unstable climate (Hot days/cold nights)

Rainforest



Living things are part of complex ecosystems that include other living things in the same environment. An organism must adapt to better escape predators, hunt for prey and reproduce.

Adaptations can include changes in behaviour or structural features. Features that are helpful for survival are passed on to offspring so that future generations become better adapted to that environment over time.

List an adaptation that helps each of these animals survive in their environment:

Camel (desert)	Tree frog (rainforest)	Dolphin (ocean)
